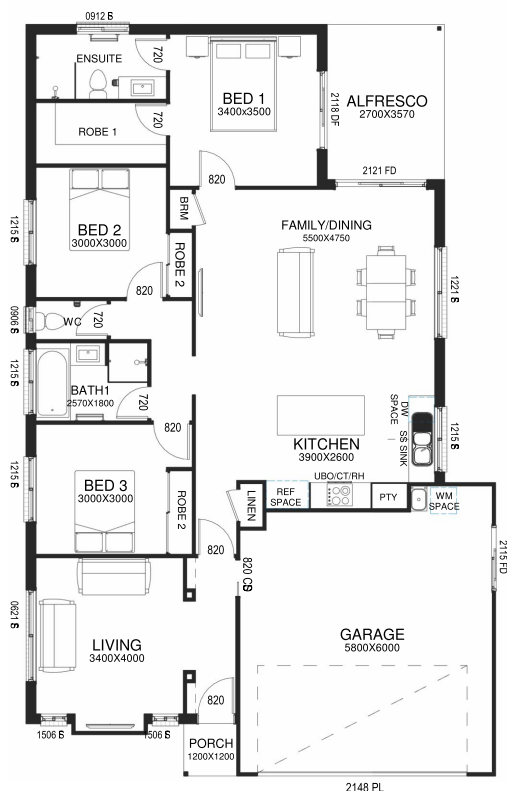


The Gecko

3  2  2 



BlueGecko
— H O M E S —



Features

- Separate Media
- Family
- Dining
- Separate w/c
- Large walk in robe
- Ensuite
- Alfresco
- Porch

Floor Areas

Floor Area Living	158.9m ²
Porch	1.5m ²
Alfresco	9.6m ²
Total Area:	170.0m²

Phone: 0428 036 100

Masters Builders Lic: 15084648

ABN: 84 624 365 153

© Blue Gecko Homes. Plans and facades are artists impressions only and are not drawn to scale. Dimensions, room sizes and areas may vary.

Email: sales@bluegeckohomes.com.au

www.bluegeckohomes.com.au

PO Box 502, Hervey Bay DC